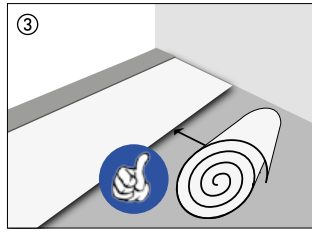
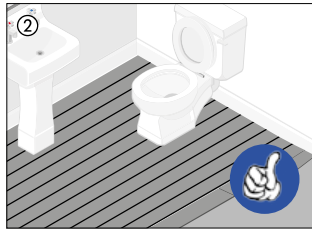
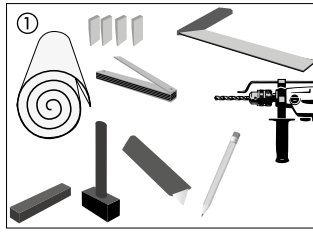
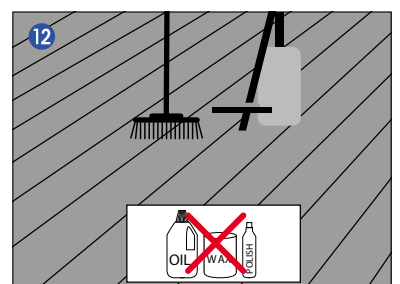
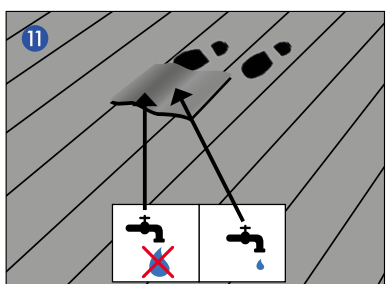
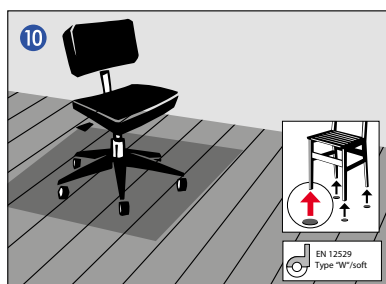
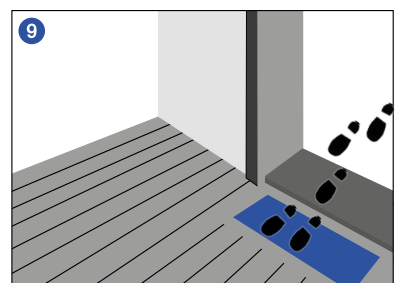
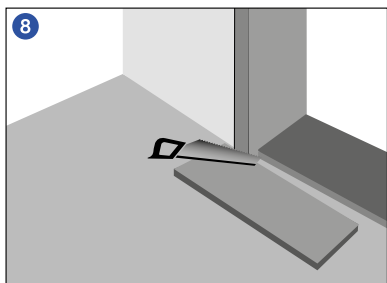
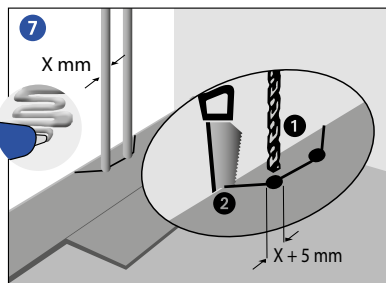
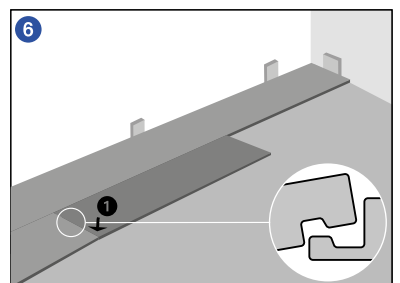
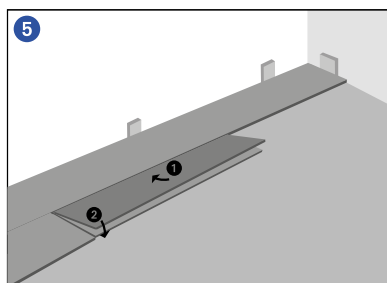
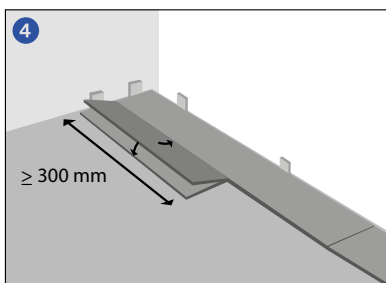
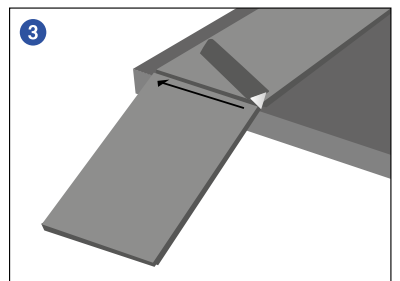
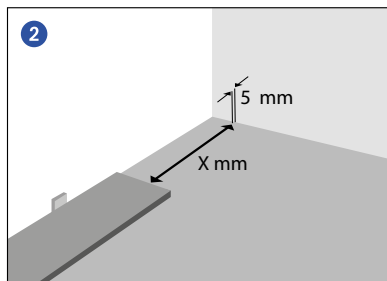
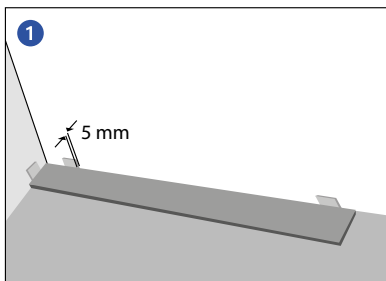
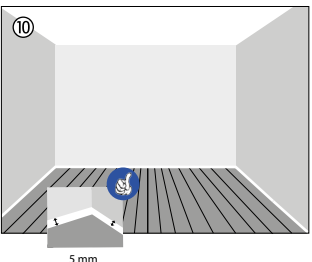
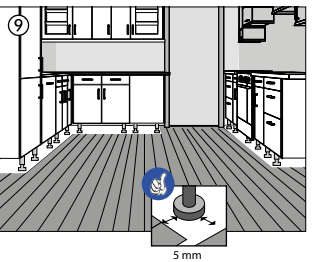
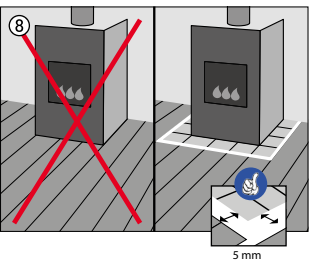
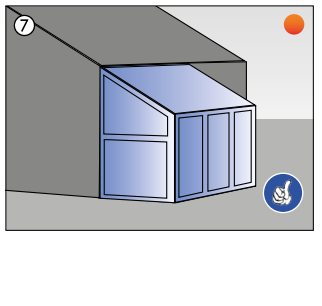
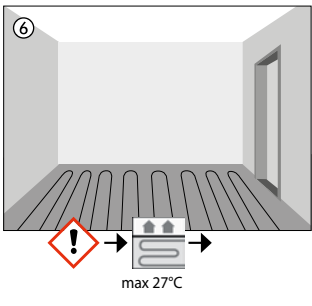
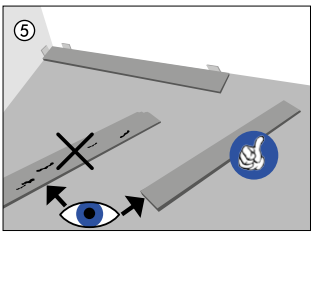
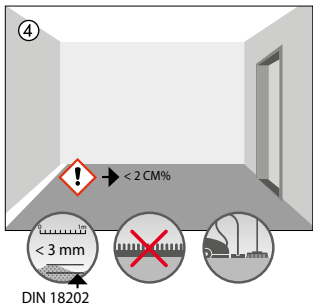


## Verlegeanleitung Designboden Minerva® Classic, Prime, Prime XL Holz

Installation instructions / Instructions d'installation / Istruzioni per l'installazione



- ① Unterlagsmatte empfohlen
- ② Underlay mat recommended
- ③ Odporúčame použiť podkladovú rohož
- ④ Sous-couche recommandée
- ⑤ Priporočena uporaba podloge
- ⑥ Si consiglia il sottopavimento
- ⑦ Doporučuje se použiť podložku
- ⑧ Alátétszőnyeg használata javasolt



**WEARMAX® FLOORING** ist eine Marke der  
**Pematex International GmbH**  
A-4201 Gramastetten, Gewerbepark 30  
Tel: +43 7239 70370, Fax: +43 7239 70370 77  
office@pematex.com

- ① Verlegung nur auf ebenen, festen, schwingungsfreien Untergründen
- ② Lay the floor only on flat, firm, vibration-free surfaces
- ③ Podlahu pokladajte iba na rovné a pevné povrchy bez vibrácií
- ④ Installer seulement sur des surfaces planes, fermes et sans vibrations
- ⑤ Polaganje samo na ravne, čvrste površine brez vibracij
- ⑥ Posa solo su superfici piane, solide, prive di vibrazioni
- ⑦ Pokládání pouze na rovné, pevné povrchy bez vibrací
- ⑧ Csak sík, szilárd, rezgésmentes felületeken fektesse le